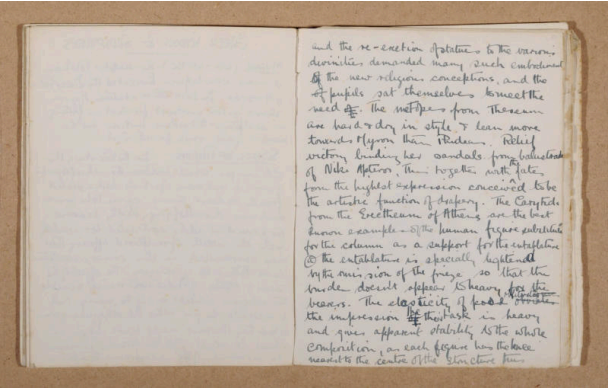


# Henry Moore Artwork Catalogue - Detailed Report



## text

**Catalogue Number**  
HMF 20(27)

**Artwork Type**  
Drawing

**Date**  
1920

**Dimensions**  
paper: 229 x 180 mm

**Medium**  
pen and ink

**Paper Support**  
cream lightweight laid

**Ownership**  
Leeds Museums and Galleries (City Art Gallery, Leeds): Gift of Joscelyn Horner.

**More Information**  
continuation of text on Greek schools of sculpture